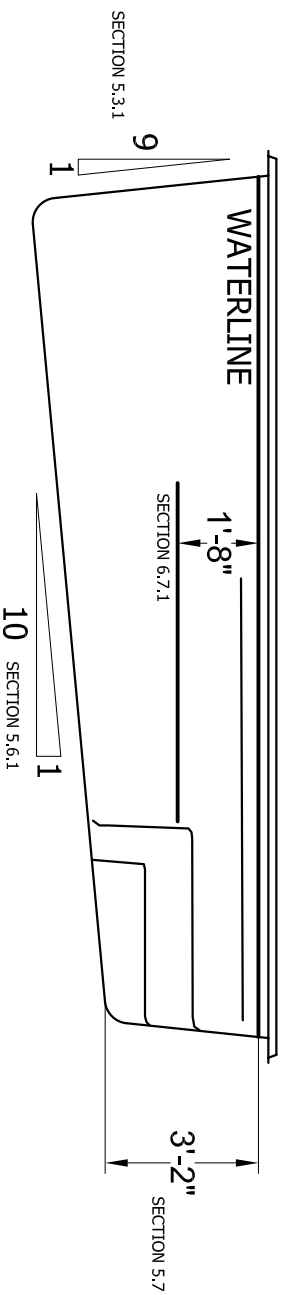


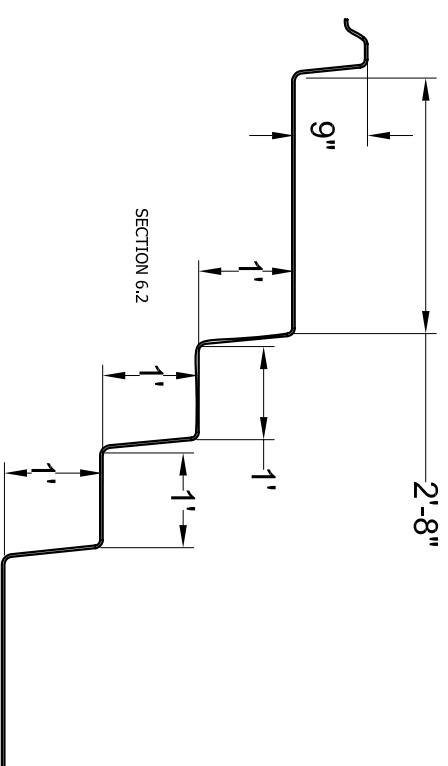
**PLAN VIEW**

SCALE 1/4" = 1'-0"



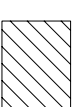
**ELEVATION**

SCALE 1/4" = 1'-0"



**STEP SECTION A-A**

SCALE 1/2" = 1'-0"



NON-SKID (SECTION 8.1)

AREA: 141 SQ.FT  
 PERIMETER: 47 FT  
 VOLUME: 3300 GAL

<b>CRYSTAL COVE 729 NSPI-5</b>	
SCALE AS NOTED	DATE 05-29-08
DRAWN BY KLB	REVISION 01